



Colvestone Primary School

Colvestone Crescent, London, E8 2LG

Headteacher: **Caroline King**

T: 020 7254 1143, Fax: 020 7249 7576

Email: office@colvestone.hackney.sch.uk



Colvestone Primary School

Class newsletter

Year 1

Summer Term 2017

Mr Barney Lom

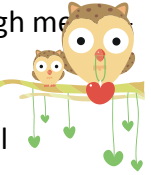
Ms Glenette Wilson

Ms Sheila Fagan

Our whole school topic for this term is '**Buildings**', our focus city for year 1 is **London**. The children will be investigating London landmarks with a maths focus. Year 1 will also be learning about buildings in a religious context ..In Literacy our class story is '**The True Story of the 3 Little Pigs**' .

Personal, Social Health, Economic Education (PSHEE)

In PSHEE our topics are mindfulness and peacefulness. Year 1 will be learning about how we relate to ourselves and others through meditation, mindfulness. We will be having discussions about our emotions and how they make us feel both physically and mentally. Year 1 will be learning to be more self aware and will have practiced and discussed being in control of their emotions .



Communication, Language and Literacy Development (CLLD)

DSR -In Daily Supported Reading (DSR) the children will continue to develop their reading and comprehension skills through reading in small groups, supported closely by an adult.



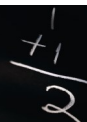
Writing -In literacy, the children will be writing and recording adverts for London. Year 1 will also be writing stories set in Colvestone School, with prior planning of plot, setting and character using adjectives, extended sentences and time connectives to scaffold our writing. The children will also be writing fact files this term about a London landmark, as well as advertising the city of London to tourists in the form of posters and spoken IPAD recorded adverts.

SPaG -Year 1 will be using our class novel to look at the year 1 SPaG curriculum including prefixes such as 'un' and suffixes such as plurals 's' and 'es' as well as 'ing' and 'ed'.

Problem Solving and Reasoning about Numbers (PSRN)

Number—In Numeracy Year 1 will be learning to read, write and count number to 50 and beyond! The children will be sorting objects in a variety of ways and will be using pictorial and abstract methods to add and subtract 1 and 2 digit numbers. Many of these skills will be useful as they plan and create a scale model of a strong and sturdy home for the 3 pigs from our class novel. They will continue multiplication and division/sharing in 2's, 5's and 10's.

Shape, Space and Measure - We will investigate different 3dshapes, space and measure with links to our scientific investigations of buildings . As well as this the children will learn mental maths skills.



Knowledge and Understanding of the World (KUW)



Year 1 will be learning about buildings in London and around the world, comparing and contrasting the different buildings that have been studied.

In Science our topic is 'Materials'. Year 1 will be looking at the topic related buildings with a focus on the following; working cross-curricular with science to create a 3d model of this house in art. We will use a range of materials and techniques.

In R.E, Year 1 will be looking at the cultural differences evident in buildings with a focus on internal and external features of places of worship.

Physical Development (PD):

In PE the children will be learning to move their bodies with precision and control. In addition to our P.E lessons (which are on Tuesday) there will be other physical activities including dancing and drumming and yoga. Year 1 will be developing our fine and gross motor skills through playing touch rugby and also learning about the importance of exercise for our health and crucially for enjoyment!

Creative Development (CD)



In Art year 1 will be using a range of materials and techniques (papier mache, painting, stenciling, construction) to plan their own building that could withstand a wolf huffing and puffing. Year 1 will be looking at cultural differences evident in buildings with a focus on internal and external features of places of worship

We will use a range of materials and techniques that an architect would use in their jobs. Children will also create nets of 3d shapes (cubes and cuboids) that can be folded into famous London landmarks.

Punctuality and routine: It is really important that children get into good time keeping and routine habits from an early age. If your child is late, they miss out on the start of lessons which start **promptly at 08.55am**, this can **affect their learning not just in the AM but throughout the day**. In Year 1 we start our day with Daily Supported Reading and if children are late they miss out on the introduction to the book being used during the session.

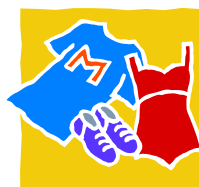
Trips and events

Details of future trips and events to follow.

Reminders

PE is every Tuesday

Please ensure your child brings a complete change of clothes including shoes.



Homework

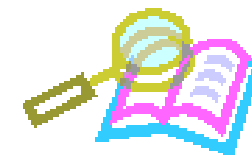
Please can homework be returned on Tuesday.

I will not be in class on a

Wednesday morning , Ms Glenette will be covering.

Reading: Reading bags

Reading books will be changed throughout the week .Homework is due in on a **Tuesday** and will be sent home on a **Friday**. It is important your child continues to read something every day at home for at least 15 minutes.



We hope that you have had a restful break and are looking forward to the final 2 summer half terms. The children have made fantastic progress with your help and support .Thank you in advance for continuing to support your child at home as they continue on their learning journeys towards year 2.

Mr Lom and the year 1 team .