



T: 020 7254 1143, Fax: 020 7249 7576

Headteacher: **Caroline King**

Colvestone Primary School

Colvestone Crescent, London, E8 2LG

Email: office@colvestone.hackney.sch.uk

Colvestone Primary School



Class newsletter

Autumn Term

Reception

Izabela Kuzniar

Ariza Hoque

Laila Philips

Welcome Reception children and parents. It has been a wonderful first couple of weeks and we are all settling in well. This term our school theme is **Ancient Egypt**. Reception Class will be learning about key events that happened in Ancient Egypt.

Personal, Social and Emotional Development (PSED)

We will be learning to talk about ourselves and our families. We will bring in photos of our family and say what makes our family special. We will become confident in expressing our thoughts and feelings and develop relationships with adults and peers.

Literacy, Communication and Language

We will be learning to sequence stories and events in chronological order. We will start to think about how characters are feeling and how we would feel if we were in their shoes. In communication and language we will learn to answer and discuss questions with a talk partner as well as sharing our opinions with the rest of the class. We will also be beginning to talk about ourselves in a positive way and think about what we are good at.

Mathematics

We will be learning to develop an understanding of maths through stories, songs, games and role play. We will learn to count 20 and beyond. We will learn to secure 1:1 correspondence by touching and saying the number for each object, and will know to stop at the last object. We will be able to use our fingers to help us count and begin to learn to recognise and say one more and one less than a given number. We will also develop our understanding of recognising and name simple 2D shapes.



Understanding the World

We are learning to develop basic skills using different devices, such as programs on the computer and iPads to find out information about Ancient Egypt. We will begin to look at our local environment, make basic maps and locate key events. We will also be looking at events and iconic people who lived in Ancient Egypt, learning about the impacts they have had on modern civilisation and the various people that lived in it.

Religious Education (RE)

We will be learning about cultural and religious Celebrations that will take place over the next few months including Diwali, Eid, Hanukah and Christmas. Our focus will be on how our families celebrate events and festivals now as well as in the past.



Physical Education (PE)

We will be learning to develop our fine motor skills and hold a pencil with a secure grip. We will be using different tools such as tweezers and scissors as well as manipulating malleable materials like playdough and clay to strengthen our fingers so that we can write our names without support. We will be learning to travel with confidence around, under, over, and through balancing and climbing equipment to experiment different ways of moving.

Expressive Art and Design

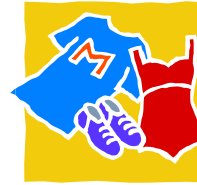
We will be learning to use a mirror and look closely at our faces to make a self-portrait. We will be using a range of materials to do this also. We will be investigating and creating pyramids. We will also be exploring various music and instruments.

Reminders

Show and tell

Show and tell happens every **Monday** and is a great opportunity for children to share a special or favourite object with the class. **Please remember, however, that objects/toys are not allowed in at any other time.**

PE:



We will have **P.E.** on **Tuesday**. Please make sure your child has appropriate P.E. kit (jogging bottoms, t-shirt and suitable footwear), otherwise she/he will not be able to take part in the P.E lesson. Please could you make sure that your child's uniform and P.E. kit are labelled and they have a spare set of clothing in school including underwear.

Homework:

Homework will be set every **Thursday** and returned the following Tuesday. Please support and encourage your child with their work.

Reading:

Reading books will go out every **Tuesday**. This will be a picture book of their choice. Please encourage your child to talk about the pictures, characters and key events in the stories and where possible highlighting key words also.



Big Read and Family Wednesday

Big Read is every **Wednesday** from 9-9:30 am and then after we will have **Family Wednesday** from 9:30—10am in class. We encourage all parents to please come if possible.

Punctuality:

Reception Class starts in the morning at 8.55am. Please make sure that your child arrives on time so that they do not miss the whole class teaching session.



Junk Modelling and Old toys/games

Quite often we use old boxes and bottles to build and create various models in Reception and would appreciate if you could bring in any unwanted boxes, plastic bottles and materials to help with such projects. Old toys and games are welcome also.

Thank you in anticipation of your support this term.